



DEWATERING SCREENS

The Eagle Dewatering Screen is specifically designed to put the finishing touches on a partially dewatered product from a sand screw. Typically, the screw discharges material with a moisture content of around 20%. By adding the Eagle Dewatering Screen, that percentage can be cut to 7-10%.

Any sand product that is processed with water is going to need the water removed before it is sold. Stacking can take time and valuable space away from your operation. The Dewatering Screen will drastically cut your moisture content and improve your site's efficiency. Optional spray bars are installed across the width of the screen for the final stage of cleaning.

This Dewatering Screen is built with a lower profile to fit directly under the screw and allow room for a discharge conveyor underneath. In order to remove the water, the Eagle Dewatering Screen is built to handle high g-forces and also incorporates a variable frequency drive. Looking to recover more fines or put water directly back into your process? Eagle Iron Works has engineered this Dewatering Screen to do just that. Eagle offers the option to return fines back to screw in a controlled measure to reduce your overall water footprint. Alternatively, the material could be sent directly to a pond or other downstream processing equipment to create a secondary product.

If you are looking for a dewatering solution that fully integrates with any existing sand screw, the Eagle Dewatering Screen is for you. Built to last and for high capacity, this Dewatering Screen will increase your bottom line and give you that extra dollar in your pocket.

DESIGN FEATURES

- High-Quality Wear Liners
- Optional Deck Dividers
- Huck Bolt Construction
- Heavy-Duty Urethane Screen Media
- Low Vertical or Install Footprint
- Low HP Vibratory Motors

APPLICATIONS

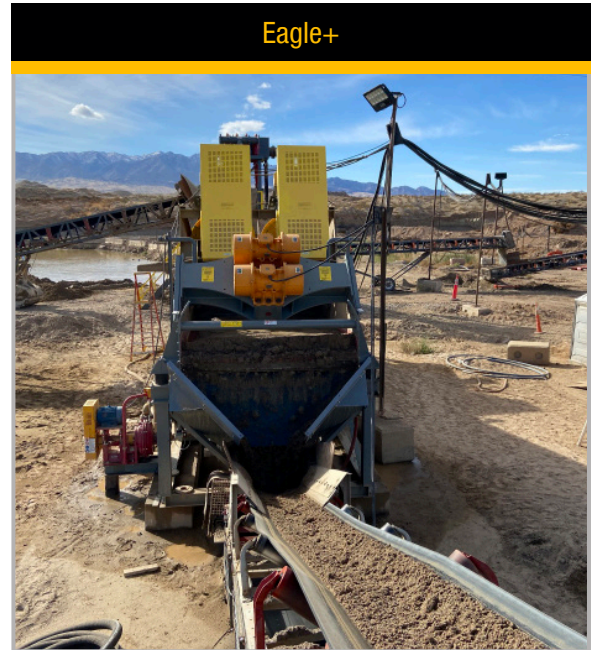
- Final Dewatering
- Fine Material Washer Discharge
- Dewatering Cyclone Underflow

Dewatering Screens							
Dewatering Screen	Screen Size	Electric Motor	Capacity	Machine Wt. Empty	Concrete/Coarse Sand	Mason/Fine Sand	UFR (-100 µm)
DS 512	5' x 12' (1.5 x 3.6 m)	2 x 8.5 HP (13 kW)	160 STPH (144 MTPH)	6815 lb (3091.2 kg)	160 STPH (144 MTPH)	120 STPH (108 MTPH)	80 STPH (72 MTPH)
DS 712	7' x 12' (2.1 x 3.6 m)	2 x 8.5 HP (13 kW)	300 STPH (270 MTPH)	8155 lb (3699.0 kg)	300 STPH (270 MTPH)	225 STPH (229.5 MTPH)	200 STPH (180 MTPH)

The Eagle Dewatering Screen can be combined with a Screw Washer to create an Eagle+ system. The Eagle+ is available as a complete system, or a Dewatering Screen can be added to an existing Screw Washer to create the Eagle+. Built with a low profile, EIW's Dewatering Screen is the perfect fit for under any sand screw or bucket wheel to reduce moisture content and increase production. The Eagle+ can improve site efficiency with decreased stacking time and less piles, reduce water footprint and recover fines by recycling water back into the Screw Washer.



The Eagle Dewatering Screen and Screw Washer combination provides a drip-free product, ready for immediate sale.



An EIW Fine Material Washer and Dewatering Screen discharging a drip free washed sand for stockpiling.